



Cargospot Handling

Drives the complete cargo handling process

Cargospot Handling is a sophisticated and comprehensive cargo operations and terminal management system. It fulfills the requirements of all cargo handling agents and terminal operators, addressing the complete handling process.

Benefits

- Compliant with IATA Initiatives
- Reduces manual data capture due to fully integrated data exchange by means of industry standard C-IMP/XML messages simplifies acceptance procedures
- Dynamic monitoring ensures service delivery to plan
- Automatic data population from electronic manifests and Air Waybill information provides on-screen visibility of incoming loads
- Simplifies transshipment processes and eases handling of loose and thru-ULD cargo
- Advanced Business Intelligence and KPI management provides excellent 'what if' standards

A highly perceptive and common sense solution, Cargospot Handling is easy to learn and easy to use. With intuitive screens (on any device) and the ability to adapt the system configuration, it can suit any individual operational and commercial need.

Air cargo is a highly competitive business, requiring a consistently quality-driven service to match customer expectations and meet internal KPIs, as well as industry performance standards such as CargoIQ. Benefiting from continuous improvement, our significant client base forms the basis for cost effective, proactive enhancements.

Complete handling

Times change with technology and processes. As this technology shifts and more tech-savvy individuals are working on tarmacs and warehouses around the world, there are certain expectations of the tools they use to get their job done. Some of these include reducing manual data capture. With a fully integrated data exchange, by means of industry standard C-IMP/XML messages - we can simplify these acceptance procedures.

But in a globalized world, we'll need something that can configure acceptance security controls wherever you are. Operators on the ground will also need other information at their fingertips, including Dangerous Goods validation, or departure control, and weight & balance systems.

These are necessary, not only for the benefit of those on the ground, but also to create smooth and tidy processes for automatically transmitting shipment information to other stations, customs, or anywhere else.

Features



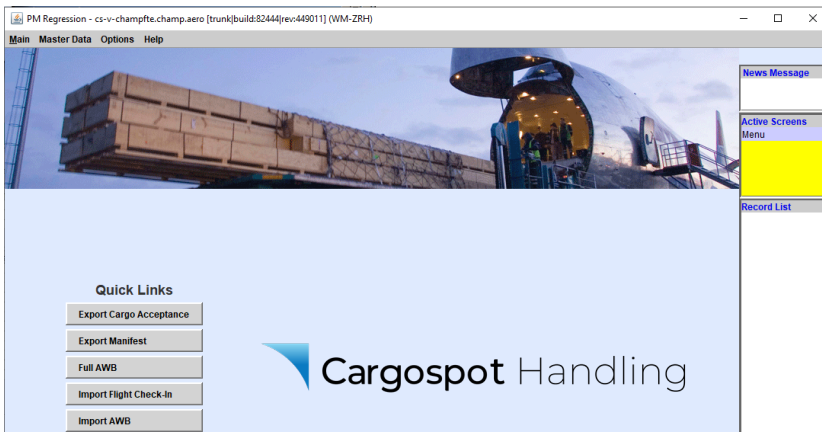
- Paper-free warehouse operation by means of mobility devices (rugged HHTs, iOS and Android based products)
- Sophisticated "Ready for Carriage" acceptance features
- Interface to departure control and weight & balance systems
- Extensive station reporting capabilities
- Supports commonly used range of communications methods (C-IMP, XML including extensive use of e-mail messaging)

Spend less time on data input

More powerful than we imagined

Handling requires swift turn around. So to make your life easier with administrative duties, your data will be automatically populated from electronic manifests and Air Waybill information provides on-screen visibility of incoming loads. This information is vigorously checked to streamline your handling and storage processes.

Furthermore, early visibility of inbound transshipments helps advanced outbound load planning. Simplified transshipment processes ease handling of loose and thru-ULD cargo. And, with automatic message generation and auto calculation of handling and ancillary charges, which increase productivity - your time is getting on with the business, not sorting out the details.



PM Regression - cs-v-champfte.champ.aero [trunk] [build:82444] [rev:449011] (WM-ZRH) Cargo Acceptance Export

Man	Dest	Status	Grp	New ULD	ULD Number	SHC	Cust	Flight Info	AWB Number	Origin	Dest	Pieces	Weight	Volume
1	FRA	DEP			AKE84383XH	EAP EAT	T1	XH3741 22MAR	777-2202 2602	ZRH	MNL	33 / 55	312/520	3.000
2	FRA	DEP			AQA34343XH	EAP EAT	T1	XH3741 22MAR	777-2202 2602	ZRH	MNL	22 / 55	208/520	2.000
3	FRA	DEP			PMC38483LH		T1	XH3741 22MAR	777-2883 2834	ZRH	FRA	10	1000	5.000
4	FRA	DEP			PMC38483LH	AOG	T1	XH3741 22MAR	020-3838 4382	ZRH	FRA	10	100	0.300
5	FRA	DEP			PMC38483LH		T1	XH3741 22MAR	777-3843 9394	ZRH	FRA	10	1000	5.000
6	FRA	DEP			PMC38483LH		T1	XH3741 22MAR	777-3883 8328	ZRH	FRA	10	100	1.000
7	FRA	DEP			BULK		T1	XH3741 22MAR	777-4239 4394	ZRH	FRA	1	1	0.020
8	FRA	DEP			AQA34343XH		T1	XH3741 22MAR	777-4383 4844 M	ZRH	FRA	3 / 10	300/1000	1.500
9	FRA	DEP			PMC24234XH		T1	XH3741 22MAR	777-4383 4844 M	ZRH	FRA	7 / 10	700/1000	3.500
10	FRA	DEP			RKN38483XH	AOG BIG ACT EAW BUP	T1	XH3741 22MAR	777-4823 4939	ZRH	MNL	5	555	2.000
11	FRA	DEP			PMC24234XH		T1	XH3741 22MAR	777-8343 9893	ZRH	FRA	8 / 10	80/100	0.240
12	FRA	DEP			BULK	RFL RCM	T1	XH3741 22MAR	777-8343 9893	ZRH	FRA	2 / 10	20/100	0.060
13	FRA	DEP			AKE90427XH	HEA BUP	T1	XH3741 22MAR	777-8392 4392	ZRH	MNL	1	500	5.000
14	FRA	DEP			BULK	AVI	T1	XH3741 22MAR	777-8492 3493	ZRH	FRA	1	15	0.300
15	FRA	DEP			BULK		T1	XH3741 22MAR	IMAL-3284 83838	ZRH	FRA	5	50	0.300
16														

Dest	Shipments	Pieces	Weight	Volume
FRA BULK	4	9	86.0	0.680
FRA AQA34343XH	2	25	508.0	3.740
FRA PMC24234XH	2	15	780.0	11.300
FRA PMC38483LH	4	40	2200.0	555.0
FRA RKN38483XH	1	5	555.0	2.000
AMS BULK				
MNL AKE84383XHB	1	33	312.0	3.000

Modern 'app' functionality allows different devices to benefit from Cargospot Handling



Common support services

Handlers have used the same set of shared devices where device ergonomics was a compromise across the different types of users. However, as the industry and technologies evolve, so must our solutions. Modern 'app' functionality running on iOS, Android, and Windows allows different devices to benefit from Cargospot Handling.

Usability is essential to effectively optimizing the enhanced functionality of the cargo systems we utilize on a daily basis. The apps are already formatted to the same devices and mobile systems the user is already familiar with and owns. These include easy capture of client flight schedules and automated schedule change updates improve accuracy and productivity.

Aside from having a fully integrated warehouse management solution, with automatic status updates that keep customers informed - you have the tools to deal with the inevitable downsides too. With storage for digital images and scanned documents, you can deal with irregularities and claims in one streamlined tool.

The screenshot displays the 'PM Regression - cs-v-champfte.champ.aero [trunk]build:82444[rev:449011] (WM-ZRH) Cargo Acceptance Export' application window. The interface includes a menu bar with 'Main', 'Master Data', 'Options', and 'Help'. Below this is a navigation bar with tabs for '1 Accept', '2 Flight Export', '3 ULD Assignment', '4 Pre-Manifest', 'Manifest XH3741 22MAR', '6 House', '7 Customs', '8 ULD Position', '9 Query', and '10 Vi...'. The main data entry area contains fields for:

- AWB:** 777 2883-2834, Is Master , Issue: XH ZRH WM, 2022-03-22 10:57, 163105, 100280
- Agent:** 8144504-8101 Buch Air Cargo (ZRH), Docs , Goods , FFM DEP, Block MAN , Custom
- Shipper:** [Field], Issue: [Field], Block PRE , Reason [Field]
- Consignee:** [Field]
- AWB Origin:** ZRH, **AWB Dest:** FRA, **Manifest Dest:** FRA, **BUF:** , **ULD:** PMC38483LH
- Carrier:** XH, **Flight + Date:** 3741 22MAR22, **Priority:** [Field], **HWB SDC:**
- AWB Pieces:** 10, **SLAC:** [Field], **AWB Weight:** 1000.0 Kg, **AWB Volume:** 5.000, **Chrg Wt:** 1000.0
- Rcv.Pieces:** 10, **SLAC:** [Field], **Rcv.Weight:** 1000.0, **Rcv.Volume:** 5.000, **Chrg Wt:** 1000.0
- EU Pallet:** , **Agent:** 8144504-8101
- Date/Time:** 14MAR22 11:10, **Location:** [Field], **Customs:** T1, **OCI:** [Field]
- Nature Goods:** SPARES, **SEC:** Y, **X-Ray:** , **DGR:** , **Check:** , **UN count:** [Field], **Value Customs:** [Field], **RFC:**
- Product:** [Field], **Price Class:** [Field]
- SHC:** [Field], **DIM:** , **Irregular:** , **Damage:**
- Man.SHC:** [Field]
- Handling:** [Field]
- OSI:** [Field], **EAWB:** , **No RCS:**
- P.O. Ref:** [Field], **Emgcy Ctc:**
- Remarks:** [Field]
- Product Temp (°C):** [Field] - [Field]
- Storage Temp (°C):** [Field] - [Field]
- Manifest Rem:** [Field]
- FBL origin info:** [Field], **Customs Msg:** [Field]

At the bottom, there is a sidebar with 'News Message', 'Active Screens Menu', 'Flight Export', 'Record List' (listing various AWB numbers), and a 'Query (F7)' section with buttons for 'Edit (F2)', 'Add (Ins)', 'Delete (Del)', 'OK', and 'Exit Screen'. A bottom bar contains buttons for 'Print Labels', 'Show Msgs', 'Free Msg', 'History', 'Notes', 'Discrepancy', 'Add. Services', 'Gen.Invoice', 'Prints', 'FSR', 'Trace', 'TGC', and 'Send FSU '. The status bar at the very bottom indicates 'Record 3 of 15'.

Our Portfolio



CHAMP Cargosystems provides the most comprehensive range of integrated IT solutions and distribution services for the air cargo transport chain. Our portfolio spans Cargo Management Systems, messaging and integration services through our Community Integration Platform and a comprehensive suite of eCargo solutions. These include applications to meet customs and security requirements, quality optimization, as well as e-freight and mobility needs. The products and services are well known under the Cargospot and Traxon brands.

CHAMP

Cargo Management

CHAMP

eCargo

CHAMP

Insights

About Us

CHAMP Cargosystems aims to maximize the efficiency and capacity of air cargo supply chain by providing a wide array of integrated IT solutions and distribution services. As of January 2022, it is a wholly owned subsidiary of SITA. CHAMP serves over 200 airlines and GSAs, and links these with some 3,000 forwarders and GHAs worldwide. Its solutions evolve with ever changing times to meet the needs of global transport logistics and facilitate trade.

For further information see: www.champ.aero

CONNECTED THINKING FOR THE AIR
CARGO COMMUNITY



Global Headquarters
CHAMP Cargosystems S.A.
Lux Tech Center building
2, rue Edmond Reuter
Zone d'Activités « Weiergewan »
L-5326 Contern



Grand Duchy of Luxembourg
+352 268 16 100
+352 268 16 401
info@champ.aero
www.champ.aero

CHAMP®, CHAMP Cargosystems®, Cargospot® are registered trademark rights owned by CHAMP Cargosystems S.A., Traxon® is a registered trademark right which is used with the consent of the owner. Specifications subject to change without prior notice. This literature provides outline information only and (unless specifically agreed to the contrary by CHAMP Cargosystems in writing) is not part of any order or contract.